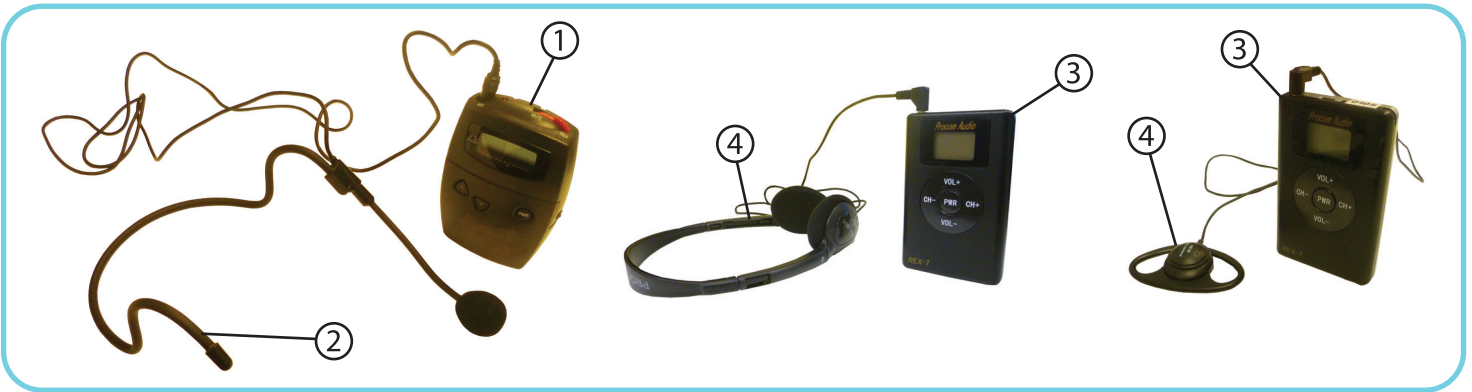


PORTABLE RADIO FREQUENCY INTERPRETATION SYSTEM

REX-7

USER'S MANUAL

You should have:



- ① 1 portable transmitter
- ② 1 headset with microphone
- ③ Multiple receivers REX7
- ④ Multiple headphones for receivers



Transmitter



1-**Connect** the headset microphone to the portable transmitter.

2-Turn the transmitter on by pressing the **power button**.

3-Using the UP or DOWN button **select the transmitter CHANNEL** that offers the best audio signal with the lowest level of interference (noise).

4-Once you have chosen a transmitter channel, match the receiver channel as indicated in the table below.

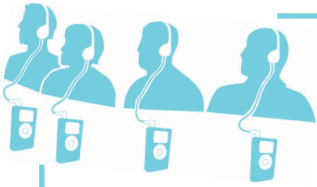
Transmitter channel	Receive Channel
A	1
C	2
E	3
I	4
F	5
H	6
B	7

5-**LOCK OR UNLOCK the selected channel:** To lock the channel selection on the transmitter, press and hold either the UP or DOWN button for 2 seconds. When locked, the small padlock icon appears on the display. Press and hold again to unlock.

6- There is a red **MUTE/TALK switch** on the top of the unit. The MUTE position will turn off your microphone. The LED on the top of the unit will flash rapidly. Slide the switch to the TALK position to turn the microphone on.

7- When the visual **BATTERY LEVEL indicator** shows that the battery is fully charged, the estimated usage will be approximately 6 hours of continuous transmission. If the transmitter is needed for a full day's use, the battery should be changed at approximately mid-day. To change the batteries, open the battery compartment.

Receivers



1-Plug the headphones into the receiver. The receiver should then be turned on automatically.

2-If the receiver fails to **turn on** upon inserting the headphone jack in the receiver, press and hold the POWER button for at least **2 seconds**.

WARNING: If no signal is received by the receiver for 3 minutes, it will automatically shut off.

3-Using the CH+ and CH- buttons, **SELECT the channel** that matches the transmitter channel as indicated in page 1.

4-Use the VOL+ and VOL- buttons to **adjust the volume** level as desired.

5-When the visual **BATTERY LEVEL** indicator shows that the battery is fully charged (2 bars showing), the estimated usage time will be approximately 75 hours of continuous reception. Only replace the batteries if NO bars are showing on the battery level indicator.

FOR TECHNICAL SUPPORT, PLEASE CALL 1-888-391-3370